

The background features abstract, overlapping geometric shapes in various shades of green, ranging from light lime to dark forest green. The shapes are primarily triangles and polygons, creating a dynamic, layered effect. The text is centered in the upper half of the image.

# Year 5 Camping Residential September 2025

# What are the aims of the trip?

- ▶ To have fun and try something new.
- ▶ To encourage children to be active, well-motivated learners.
- ▶ To develop teamwork and social skills.
- ▶ To develop confidence and self esteem.
- ▶ To promote physical activity and healthy lifestyles.
- ▶ To experience some Outdoor and Adventurous Activities (OAA)

# Which school staff will be attending?

- ▶ Mr Blake will be leading the trip and will be there every day.
- ▶ Every class will be accompanied by their class teacher and class LSA.
- ▶ Mr Crane will attend with 5KCFS.

# When is the residential taking place?

- ▶ Each class is going on a different night and day in the week beginning 22<sup>nd</sup> September.

Class	Arrive	Depart
5WH	Tuesday 17:00	Wednesday 16:15
5RS	Wednesday 17:00	Thursday 16:15
5KCFS	Thursday 17:00	Friday 16:15

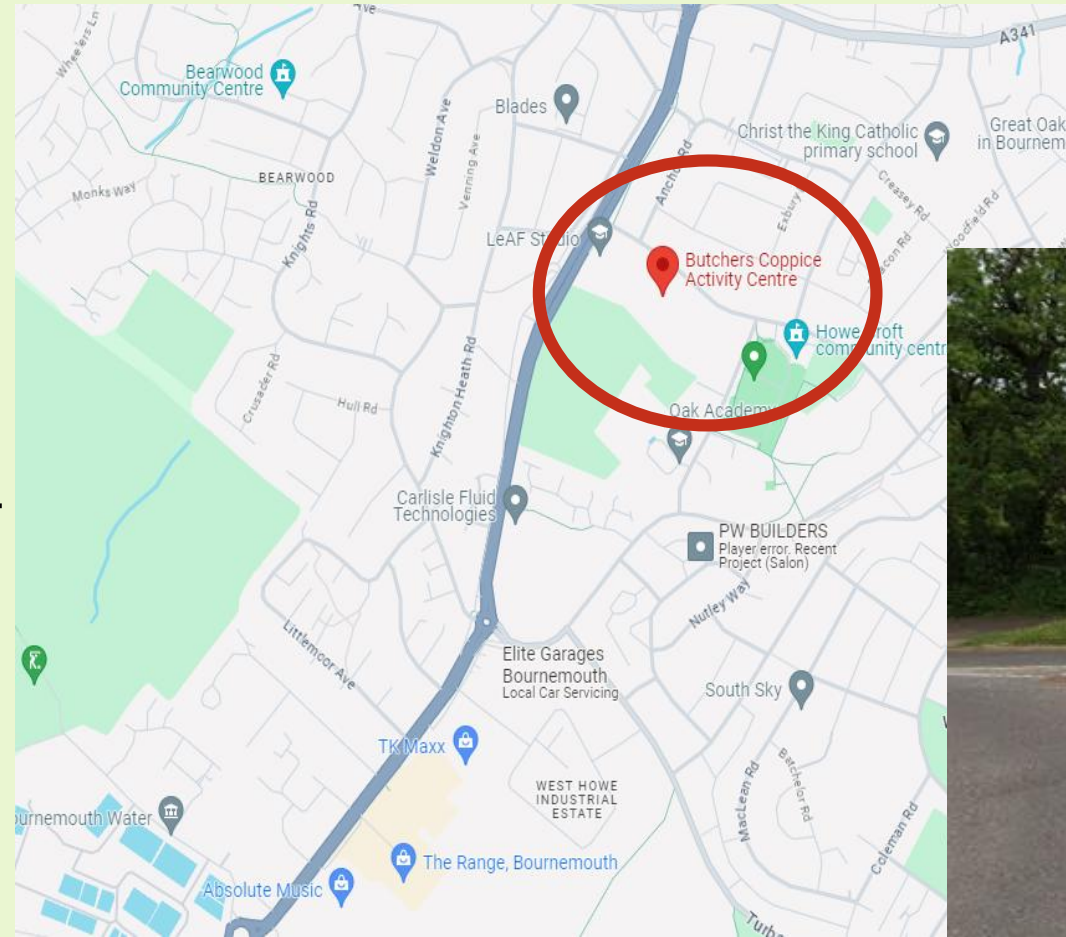
# Where is the residential taking place?

## ▶ Butchers Coppice:

▶ BH11 9JW

▶ what3words: [promises.tree.pegs](#)

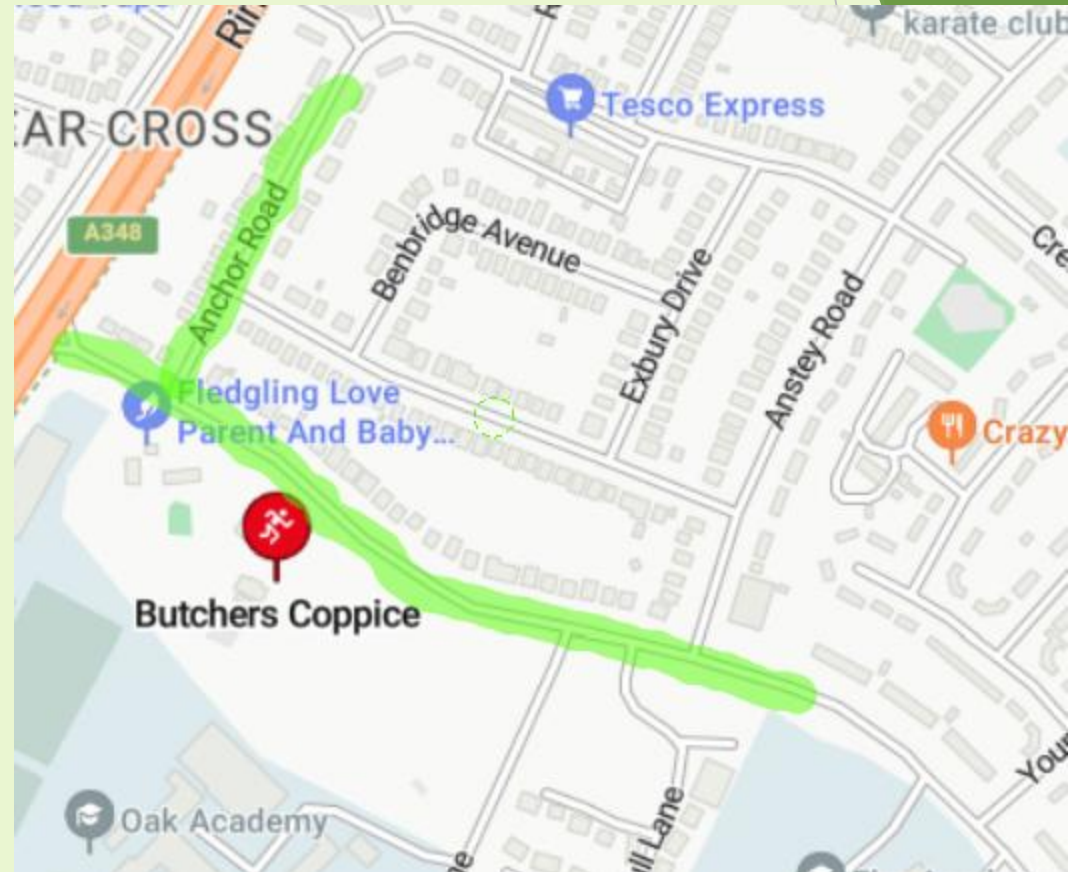
▶ the main entrance to the campsite is opposite 76 Holloway Avenue, Bournemouth at the junction of Holloway Avenue and Anchor Road





# Where will I drop my child off?

- ▶ There is plenty of free on-road parking on the roads around the entrance to Butcher's Coppice. A member of school staff will meet you at the main entrance to Butcher's Coppice and direct you to the main camping field.
- ▶ Children will then be shown which tent they are in, medication can be dropped off and parents are then free to leave.



# What will the children eat?

- ▶ Dinner: chips from a local chip shop with sausages cooked by Mr Blake at the campsite.
- ▶ Breakfast: cereals, fruits, croissants etc.
- ▶ Lunch: we ask that you send your child with a packed lunch. There is a fridge that we can use for items which need to be kept cold. Please label their sandwiches.
- ▶ Snacks: we will have plenty of fruit and biscuits.
- ▶ Do not send your child with sweets.
- ▶ *Please email the school office to let us know if your child has any dietary requirements.*

# What facilities are there at Butchers Coppice?









# What if my child has medication?

- ▶ We will take any medication which is normally kept in school (inhalers etc) on the trip with us.
- ▶ If your child requires and additional medication, we will collect the medication with clear instructions about time/frequency of administration when you arrive at the camp site. If you are not dropping your child off at the campsite, please provide these instructions in writing.
- ▶ All medication must be labelled with your child's name.

# Sun cream and insect repellent

- ▶ You may wish to send your child with sun cream and insect repellent for the trip.
- ▶ Children will be able to keep hold of their own sun cream and we will give reminders to apply their sun cream throughout the trip.
- ▶ We will collect in any insect repellent and issue it the children at different points during the trip. Please label any insect repellent so that we can ensure that your child gets their own.

# What clothing will my child need to bring?

- ▶ Comfortable activity clothing
- ▶ Shorts (knee length) or trousers and t-shirts that cover the shoulders for their time in harnesses.
- ▶ Long sleeve top for archery.
- ▶ Comfortable trainers which may get dirty.
- ▶ Warm jumpers/coats for evening activities.
- ▶ A sun hat
- ▶ Waterproof clothing if the weather forecast predicts rain.

# Will My Child Need to Bring Any Specialist Equipment?

- ▶ Sleeping bag
  - ▶ Sleeping mat
  - ▶ Bag to put their belongings in
  - ▶ Water Bottle
  - ▶ Plate, bowl, knife, fork, spoon
  - ▶ Torch (optional)
  - ▶ Card games (optional)
  - ▶ Reading book (optional)
- 
- ▶ Children need to be able to set up and pack down their bed independently. A practice at home might be beneficial.
- 
- ▶ Please do not allow your child to bring any electronic devices.

# What will the timetable look like?

## Day 1

- ▶ Arrival at 5pm
- ▶ Orientation
- ▶ Dinner 6.30pm
- ▶ Outdoor games
- ▶ Outdoor cinema
- ▶ Bedtime

## Day 2

- ▶ Breakfast
- ▶ Orienteering
- ▶ Activity 1 (Fan descender)
- ▶ Activity 2 (Archery)
- ▶ Lunch
- ▶ Activity 3 (Climbing Tower)
- ▶ Activity 4 (Shelter building)
- ▶ Packing up ready to go home at 4.15pm!



# How do I know my child will be safe?

- ▶ The site is fenced and secured.
- ▶ There is CCTV.
- ▶ School staff will be supervising children at all times.
- ▶ School staff will be camping in individual tents next to the children.
- ▶ Butchers Coppice activity leaders are fully trained to lead activities.
- ▶ First aid trained school staff and centre staff.

# What happens next?

- ▶ We will send out a final letter about the trip. The letter will include:
  - ▶ Final itineraries for the individual classes
  - ▶ A reminder of key details and information
  - ▶ Kit list
  - ▶ Behaviour code of conduct. All children and parents are expected to adhere to this.

# Any questions?

